

MONARCH WATCH TAGGING SYSTEM

IMPORTANT NOTES FOR 2020

- (1) Please submit your tagging data online if at all possible. This allows us to compile the data more efficiently. Datasheets and complete instructions are available at monarchwatch.org/tagging
- (2) Make note of the number of tags you receive and the tag code series (for example, AABC500-999, AXYZ300-349) - we would like you to include this information when you submit your data.
- (3) Be sure to provide complete contact information - we need to know how to contact you if there are questions about your data.
- (4) It is **VERY IMPORTANT** that you record the complete tag code (for example, AXYZ123) for each monarch you tag & release - partial codes can make identifying butterflies virtually impossible.
- (5) Record tags in sequential order.
- (6) Double check everything to make sure your data are accurate and complete.
- (7) Submit your tagging data to us at the end of your tagging season, by December 1st if possible. Submission online (see above) is preferred.

INSTRUCTIONS

Tag Code. Record the complete tag code for each monarch, as it appears on the tag. Note: new tags are 4 letters, 3 numbers.

Release Date. Record the release date - month, day & year.

M/F. (Male/Female) Record the sex of the tagged butterfly; leave blank if unknown. See images below for guidance.

R/W. (Reared/Wild) Record whether the tagged adult monarch was **reared** (from the egg, larva, or pupa stage) or captured as a **wild** adult butterfly.

Release Location. Record the location as city, state (province), zip (postal) code and country (US/CAN).

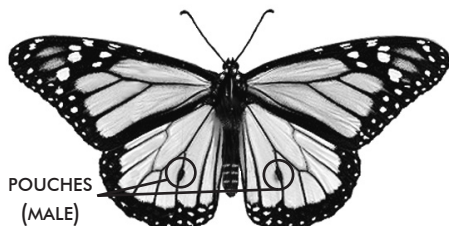
You might find it easier to work with a partner, taking turns tagging and recording data.

1. Carefully hold a monarch between your thumb and index finger along the leading edge of the butterfly's forewings (close to the body, not the tip) and locate the discal cell (large mitten-shaped cell on hindwings). See figure below for guidance.

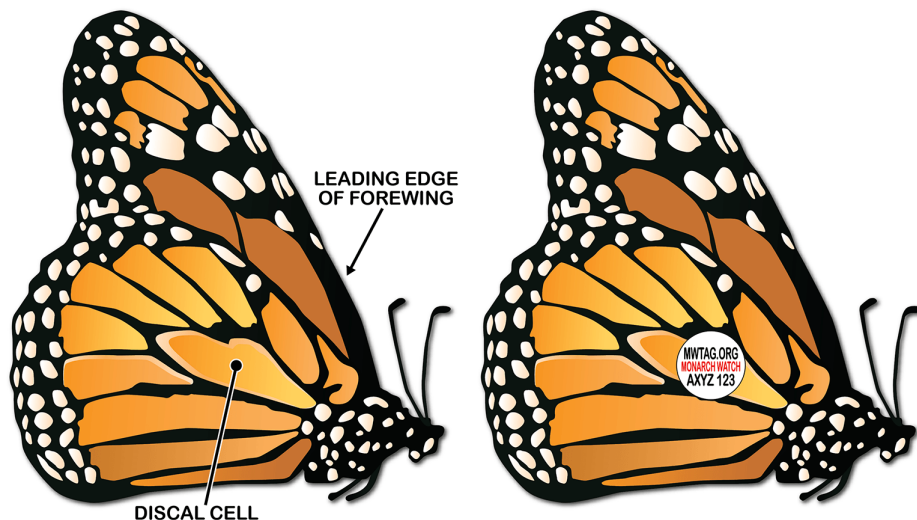
2. Record all data before removing a tag from the sheet.

3. Remove a tag from the sheet by its edge (a toothpick might be helpful), place it over the discal cell of either hindwing and carefully apply pressure to the tag from both sides of the butterfly (see figure below for placement) using your fingers. Press firmly for several seconds and release the butterfly - again, making sure all of the information is recorded first!

Try not to allow the tag to stick to any other surface, such as your finger, before applying it to the butterfly - to be most effective, the adhesive on the tag must be clean when applied to the wing.



It's pretty easy to tell a male monarch (above) from a female monarch (below) when you know what to look for.



PROPER PLACEMENT OF MONARCH WATCH TAGS